

TYPE CL

Features

- Range taking
- Easily installed with a key wrench
- Convenient peep hole
- Re-usable
- Suitable for use in circuits rated 35KV or less, proper high voltage spacing and insulation techniques must be used
- Rated for 90° C

Benefits

- Permits inventories to be kept to a minimum
- Time savings
- Easy inspection
- Provides efficient use and flexibility in the field
- Application versatility

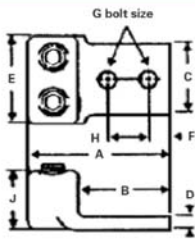


Fig. 1

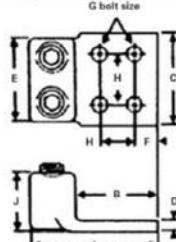


Fig. 2

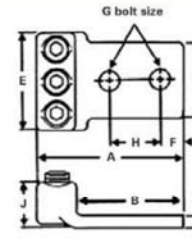
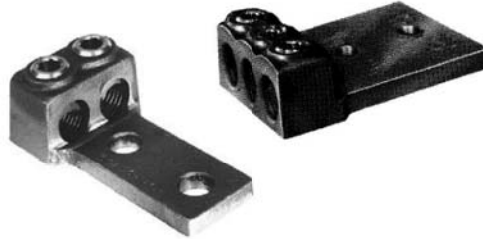


Fig. 3

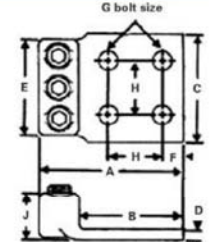


Fig. 4

Catalog Number	Figure Number	Wire Range	Dimensions								
			G	A	B	C	D	E	F	H	J
CL-2-8†	1	8-14	1/4	2-3/16	1-3/4	5/8	1/8	11/16	9/32	5/8	15/32
CL-2-4†	1	4-8	1/4	2-1/2	2	1	1/8	1	9/32	5/8	17/32
CL-2-1	1	1-4	3/8	2-13/16	2	1-1/4	7/32	1-1/4	7/16	1	19/32
CL-2-2/0	1	2/0-1	1/2	4-7/16	3-1/2	1-1/2	1/4	1-9/16	5/8	1-3/4	13/32
CL-2-4/0	1	4/0-2/0	1/2	4-5/8	3-1/2	1-3/4	9/32	1-3/4	5/8	1-3/4	15/16
CL-2-300	1	300kcmil-4/0	1/2	4-3/4	3-1/2	2	5/16	2-1/8	5/8	13-3/4	1-9/16
CL-2-500	1	500kcmil-300kcmil	1/2	5-3/8	3-15/16	2-1/2	11/32	2-1/2	5/8	1-3/4	1-13/16
CL-2-700	2	700kcmil-500kcmil	1/2	5-19/32	4	4	13/32	2-15/16	5/8	1-3/4	2-1/8
CL-2-1000	2	1000kcmil-750kcmil	1/2	5-27/32	4	4	15/32	3-1/4	5/8	1-3/4	2-11/32
CL-3-4/0	3	4/0-2/0	1/2	4-5/8	3-3/8	2-1/2	9/32	2-3/4	5/8	1-3/4	15/16
CL-3-300	3	300kcmil-4/0	1/2	4-3/4	3-1/2	3	5/16	3-1/4	5/8	1-3/4	1-17/32
CL-3-500	4	500kcmil-300kcmil	1/2	5-3/8	4	4	11/32	3-3/4	5/8	1-3/4	1-13/16
CL-3-750	4	750kcmil-500kcmil	1/2	5-19/32	4	4	13/32	4-3/8	5/8	1-3/4	2-1/8
CL-3-1000	4	1000kcmil-750kcmil	1/2	5-27/32	4	4	15/32	4-13/16	5/8	1-3/4	2-11/32

All wire sizes, unless noted otherwise, are American Wire Gauge (AWG)

† With Filister Head Screw

UL File E158587